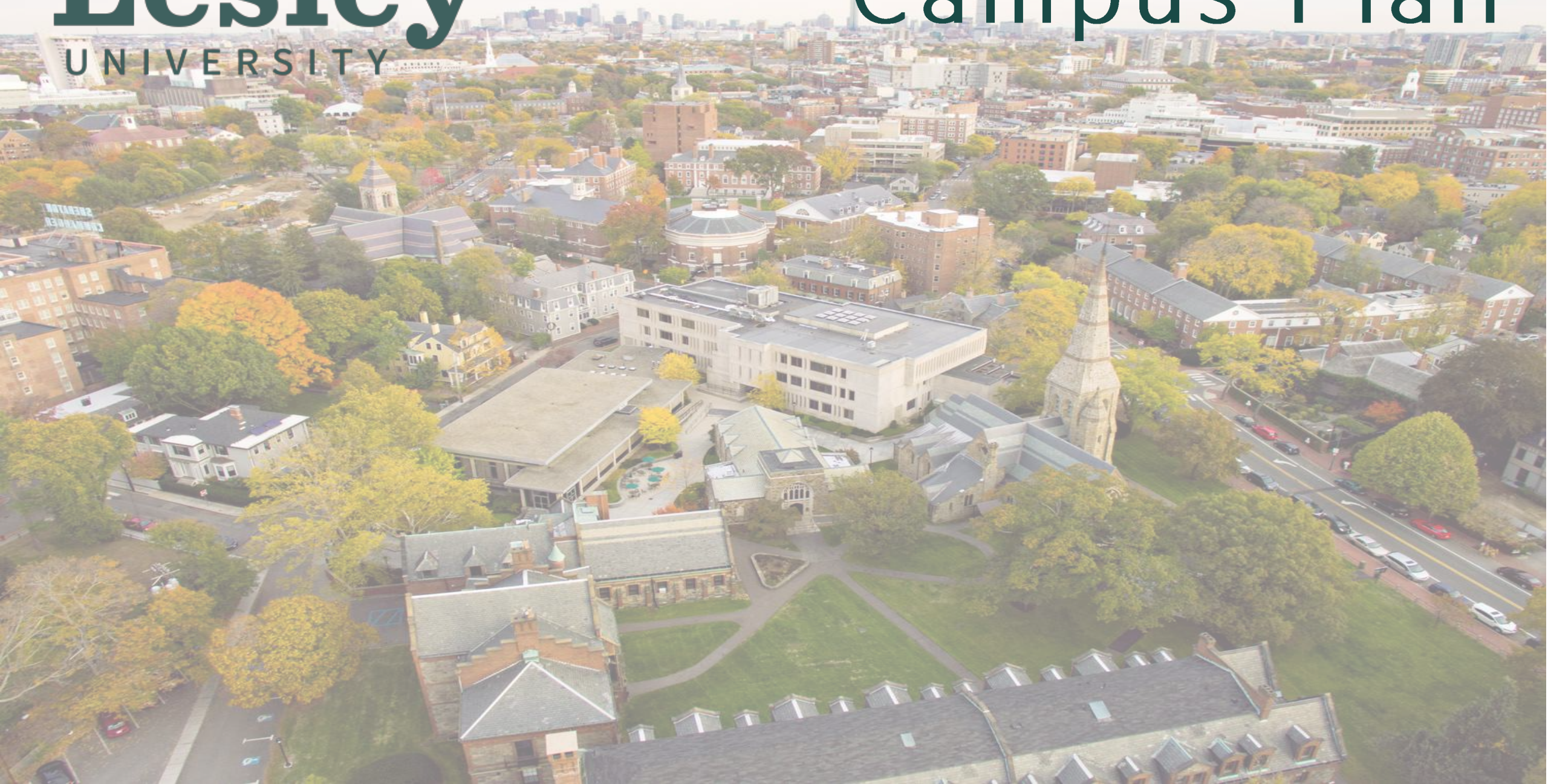


Lesley

UNIVERSITY

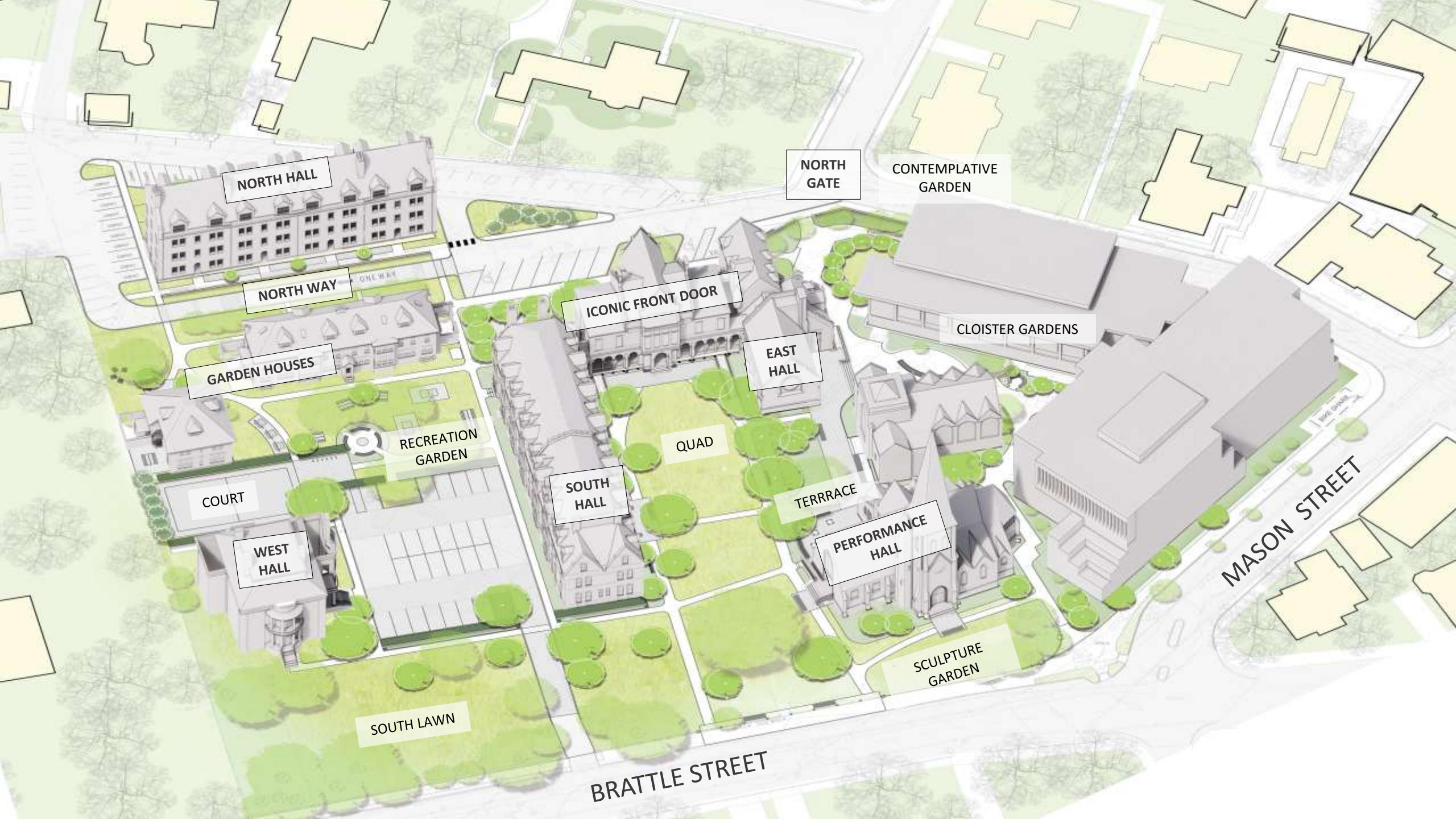
Campus Plan



Creating a built environment that
supports our vision and future

SOUTH CAMPUS

We are transforming our historic South Campus to become the vibrant center of undergraduate student life



NORTH HALL

NORTH GATE

CONTEMPLATIVE GARDEN

NORTH WAY

ICONIC FRONT DOOR

CLOISTER GARDENS

GARDEN HOUSES

EAST HALL

RECREATION GARDEN

QUAD

COURT

SOUTH HALL

TERRACE

WEST HALL

PERFORMANCE HALL

SOUTH LAWN

SCULPTURE GARDEN

BRATTLE STREET

MASON STREET

WEST HALL





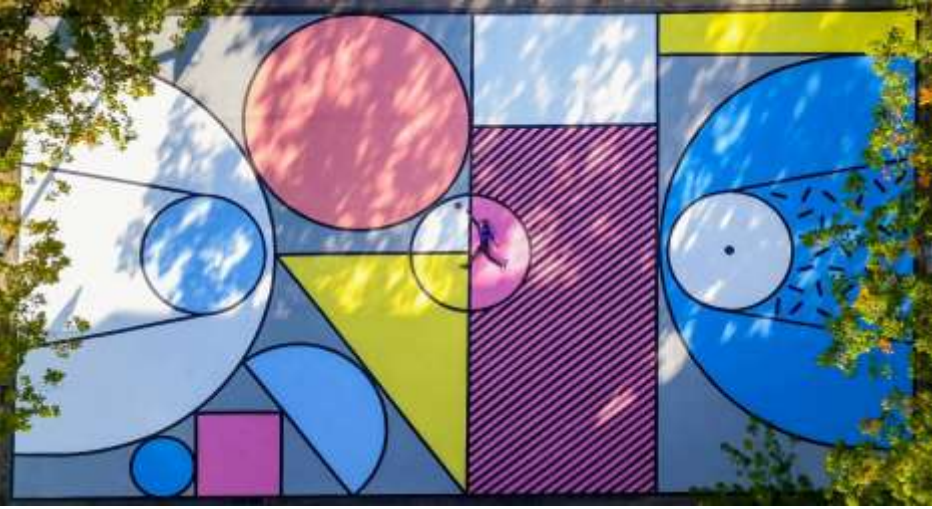
RECREATION
GARDEN

WEST
HALL

SOUTH
LAWN

RECREATION GARDENS & COURT





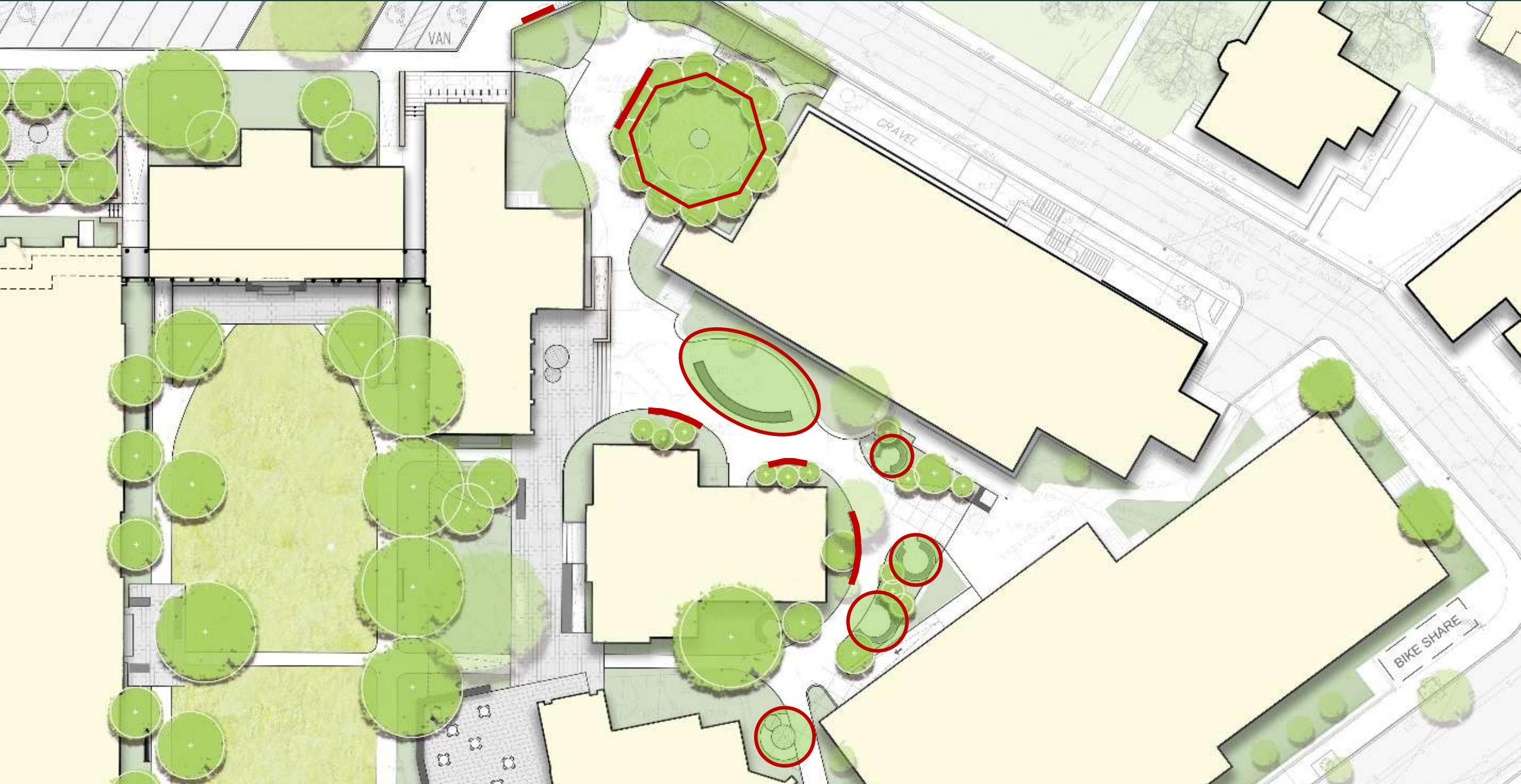
EAST GATE



EAST GATE



CLOISTER GARDENS





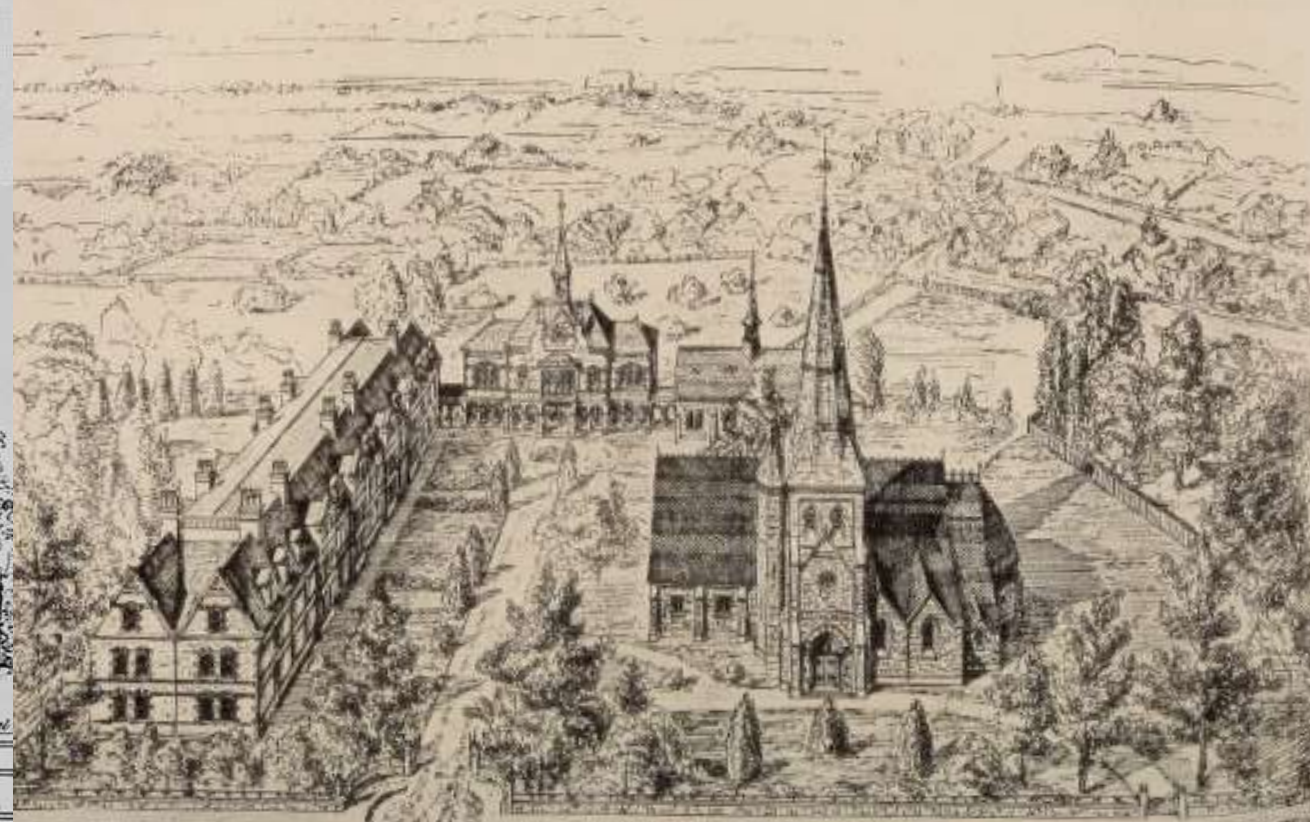
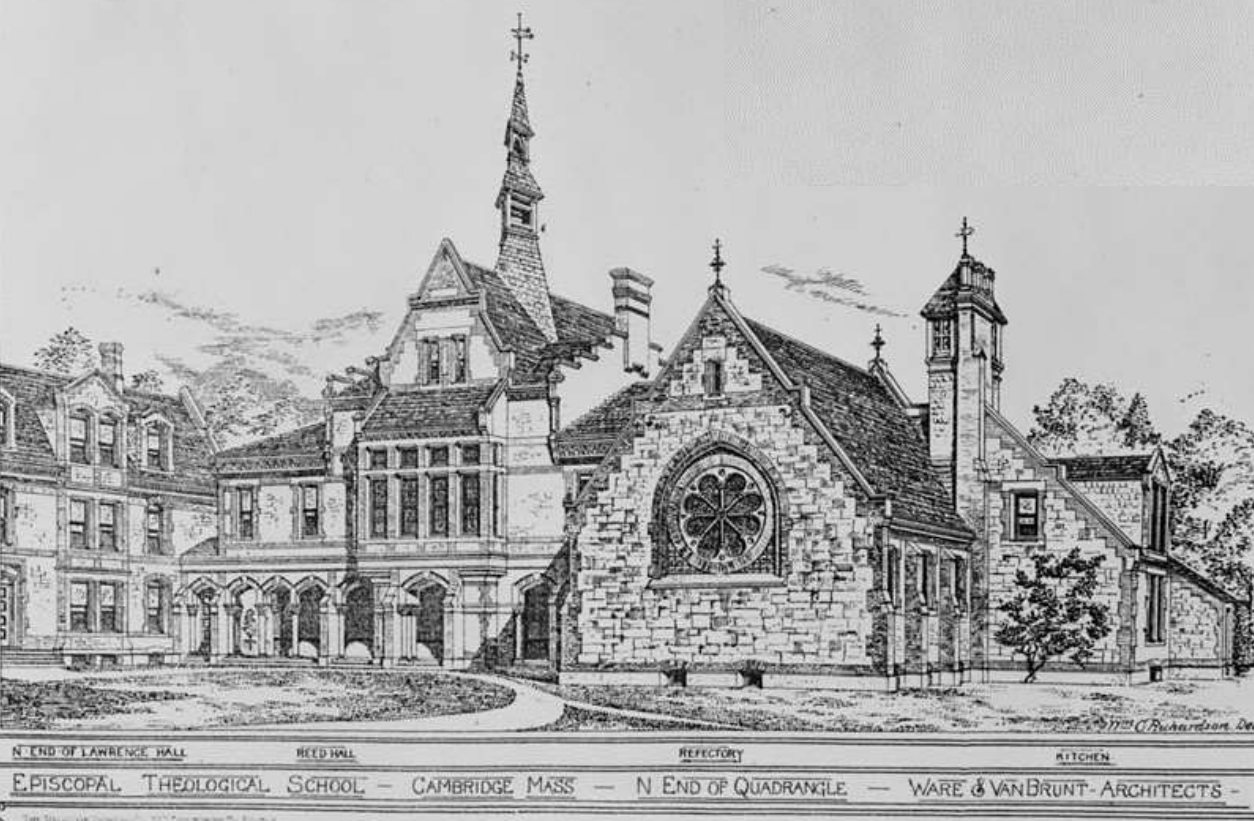
PERFORMANCE HALL



PERFORMANCE HALL



HISTORY



The chapel was consecrated on November 16, 1869. William Robert Ware and Henry Van Brunt were leading architects of their era, also responsible for Harvard's Memorial Hall nearby. The school had a close relationship with Harvard's Divinity School, allowing for cross-registration of classes.

The Divinity school was always a leader of inclusiveness. It was the first seminary to accept African-Americans. It was a pioneer in educating women to be deacons in the church and later to ordain women into the ministry. The school had the first openly gay and lesbian theology professors in the 1970s and was the first with an openly lesbian dean. The first gay marriages in the Episcopal Church were performed in St. John's Memorial Chapel in 1995.

This history of openness and inclusion and its alignment with Lesley's values and vision, made the acquisition of the campus a natural augmentation.

PERFORMANCE HALL



EXISTING PERFORMANCE HALL



RECEPTION



THEATER IN THE ROUND



LECTURE



ART EXHIBIT

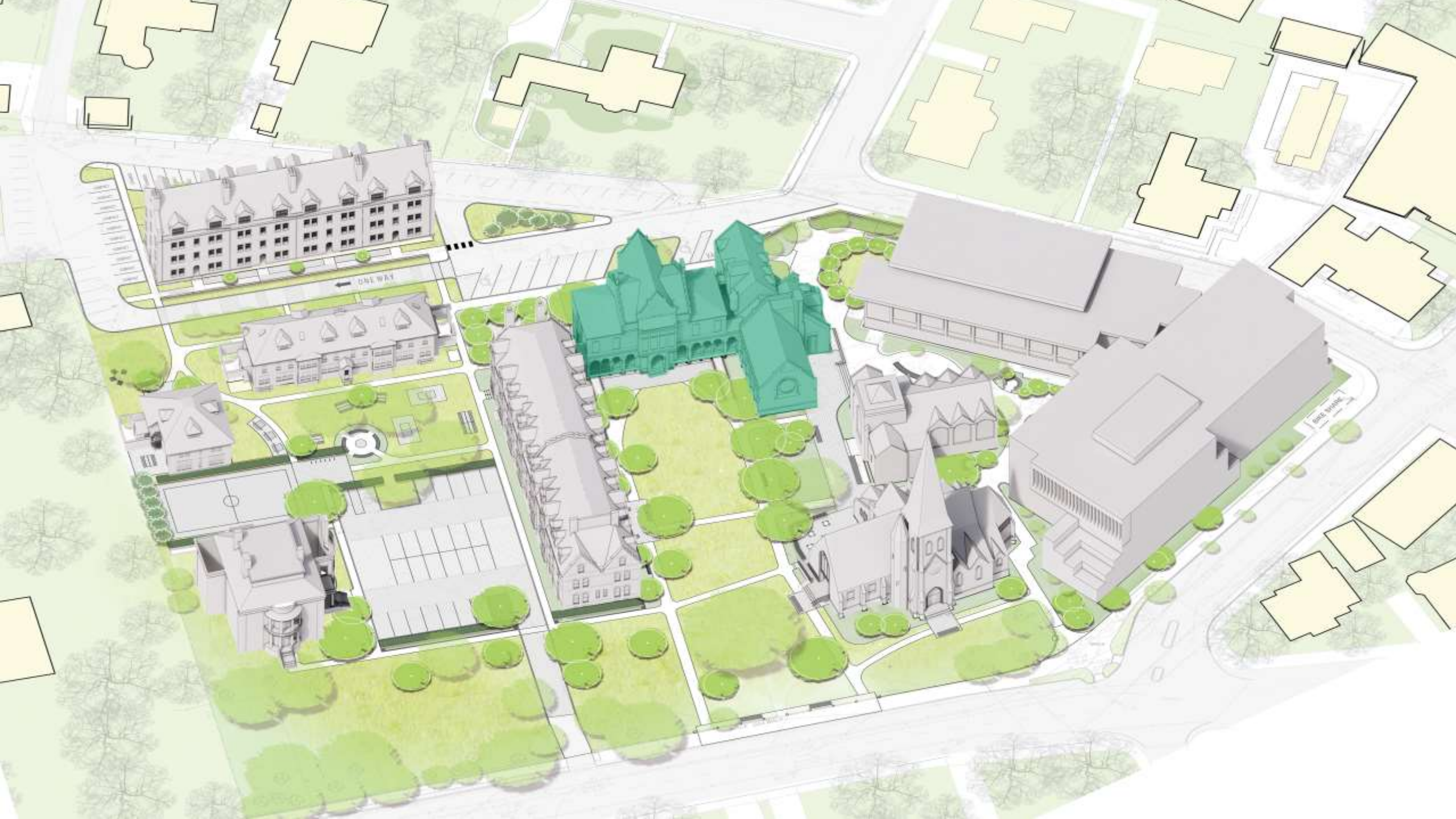


EXISTING ACCESSIBILITY



TERRACE CONNECTION

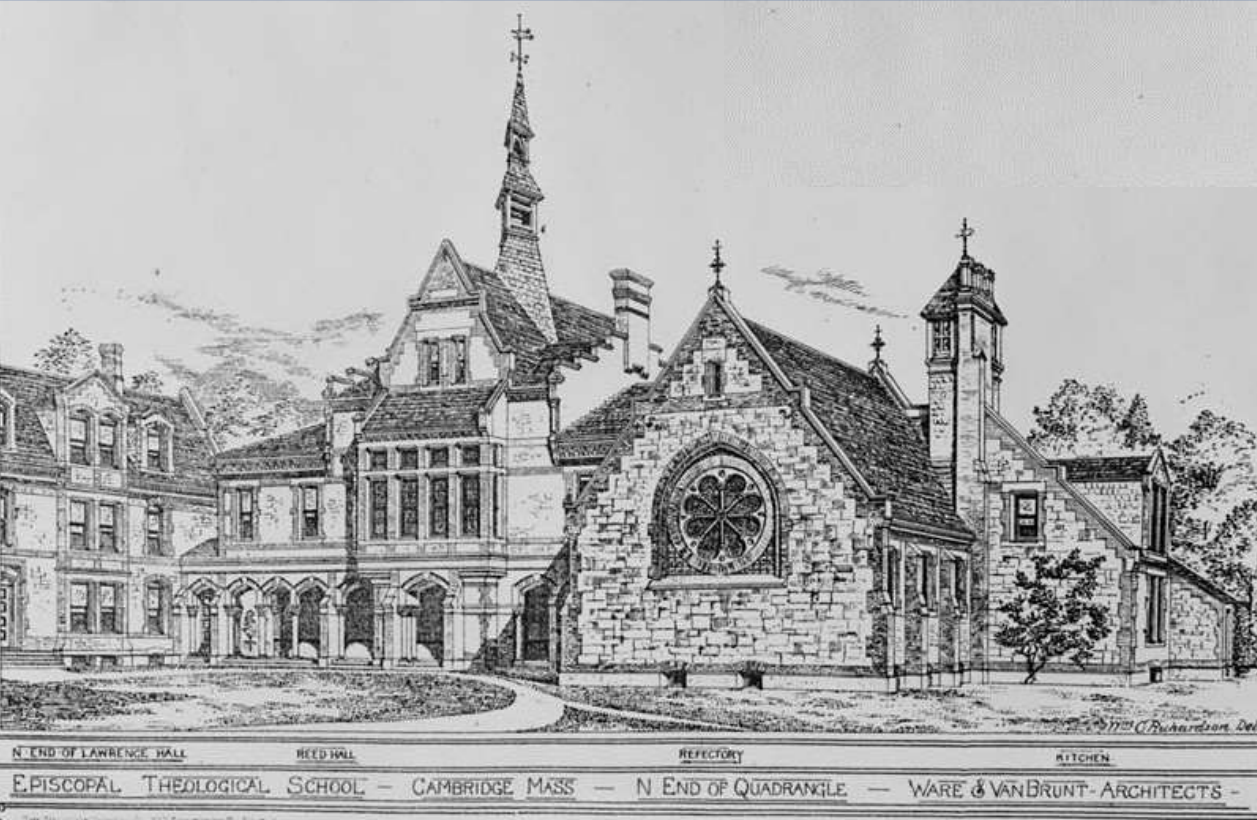




ICONIC FRONT DOOR



HISTORY



The South Campus is an historic landmark, located next to the Longfellow House. Designed by the architectural firm Ware and Van Brunt. William Robert Ware and Henry Van Brunt, leading architects of their era were responsible for the quadrangle of residences, classrooms, and library.

Founded as the Episcopal Theological School in 1867 due to the need for a New England-based seminary in the Episcopal Church, the school was always a leader of inclusiveness.

Students and alumni were active in the civil rights movement. In 1965, seminarian Jonathan Daniels died protecting a young African-American woman from a racist attack in Hayneville, Alabama. Dr. Martin Luther King, Jr. called Daniel's selflessness, "one of the most heroic Christian deeds of which I have heard....," and the Episcopal Church designated him a martyr.

This history of openness, instilling a strong passion for equity, and its alignment with Lesley's values and vision, made the acquisition of the campus a natural augmentation.

EXISTING FIRST FLOOR



STUDENT CONCIERGE



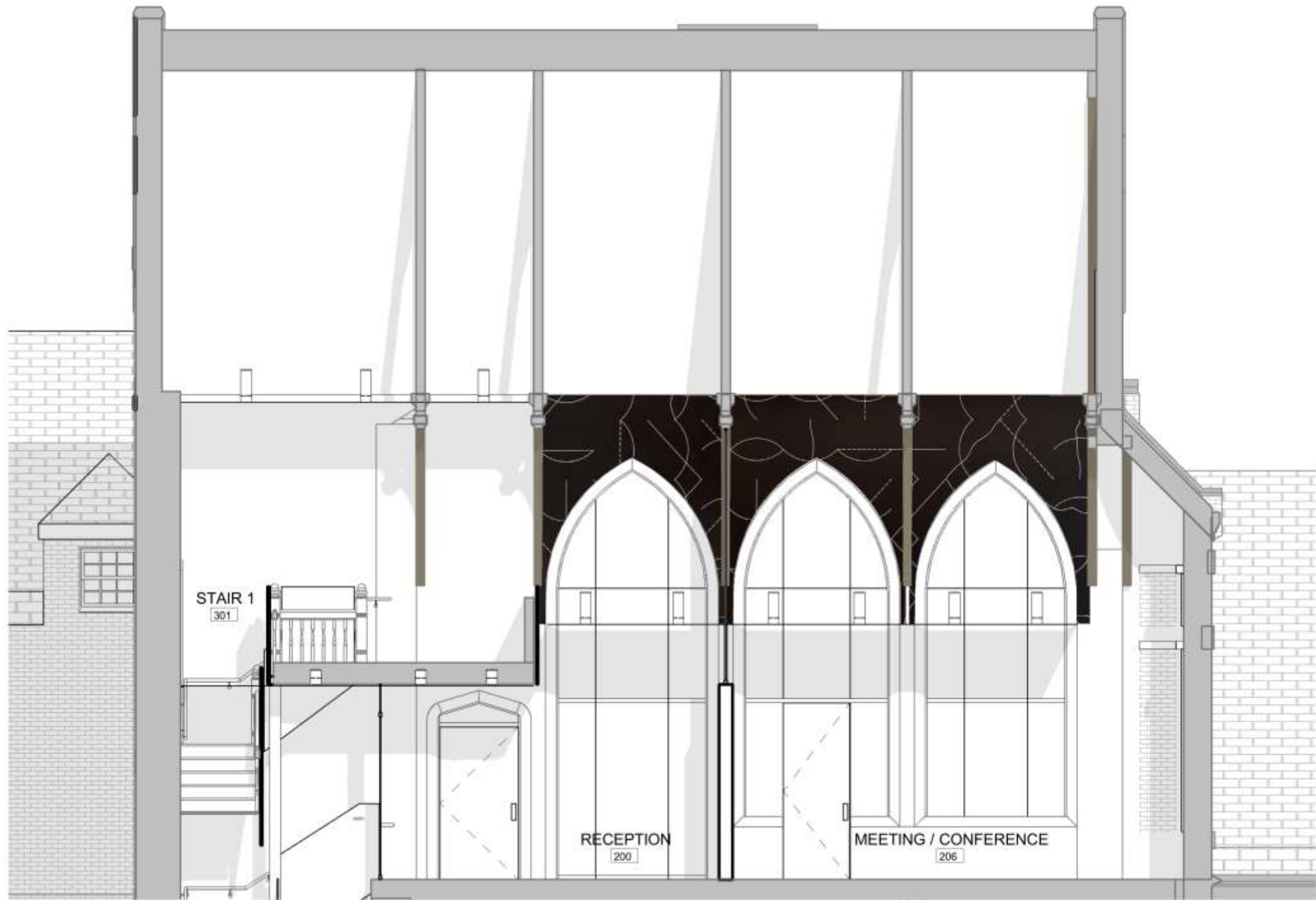
EXISTING SECOND FLOOR



MEETING HALL







STAIR 1
301

RECEPTION
200

MEETING / CONFERENCE
206

RECEPTION



BRIDGE GALLERY



EXISTING QUAD



REIMAGINED QUAD



EXISTING QUAD



REIMAGINED QUAD



ART AT QUAD



QUAD



We invite you to join us in transforming the student experience on historic South Campus through art everywhere.